

SAP GUI Options and Settings

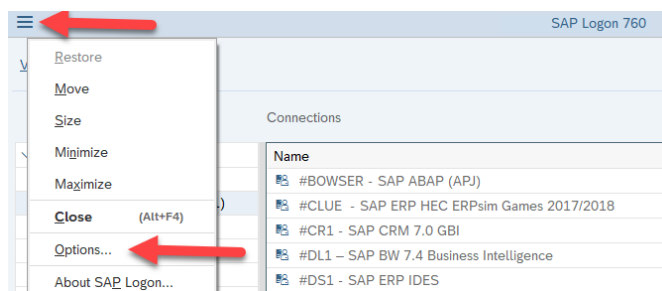
The SAP GUI interface has changed with the 7.50 and 7.60 versions for Windows. It is possible to update the Theme Settings to have current versions of the GUI look like previous versions.

The first step is to open the Theme Settings, which can be done from the GUI Logon or once signed in the client. Then select the desired Theme. The first part of this document explains how to open the Theme setting. The next section explains the themes that UCC faculty may be looking for.

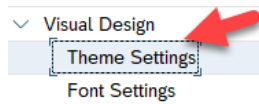
Open Theme Settings:

To change from the GUI Logon:

Select the 3 horizontal line icon in the upper left corner.
Select Options



Select Visual Design
Select Theme Settings



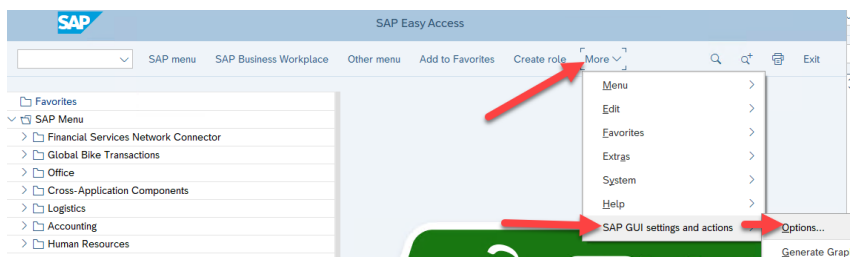
Select the needed theme based on the information below

To change options within a client

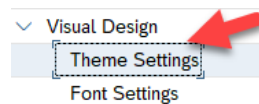
Select More

Select SAP GUI settings and actions

Select Options



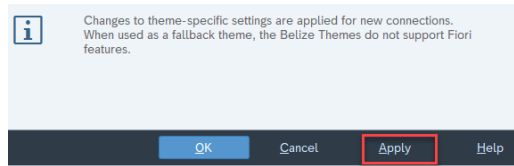
Expand Visual Design
Select Theme Setting



After changing your theme select Apply.

Log off the client.

Log on to see the changes

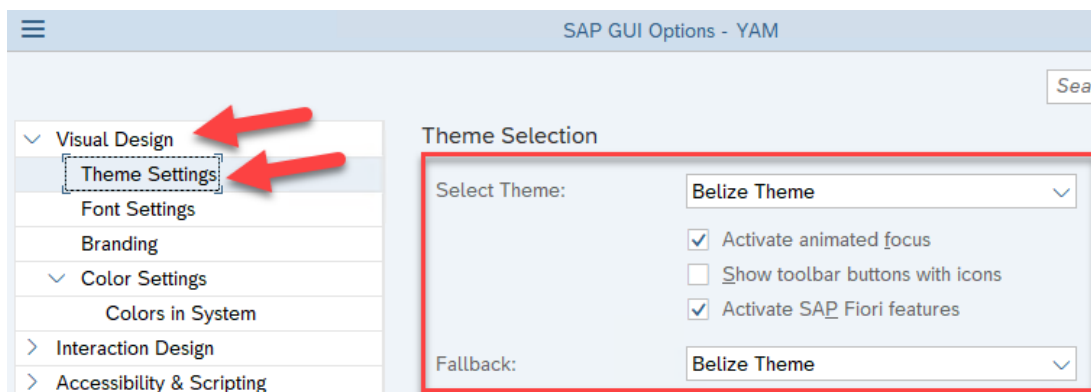


Select the needed theme based on the information below

Select desired Theme:

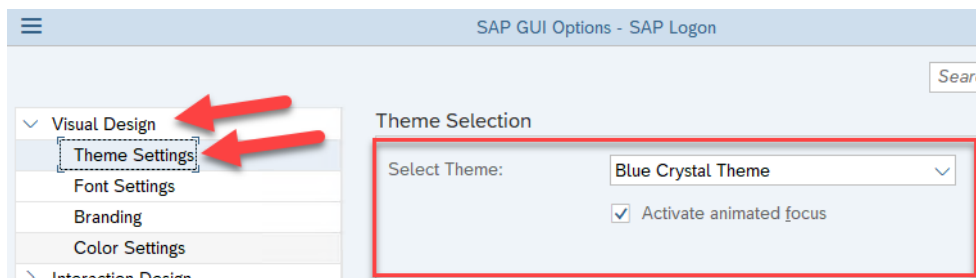
Use either of the steps above to get to the Theme Selection screen.

The *Introduction to SAP S/4HANA Using Global Bike* screen shots were taken using the 7.50 GUI. The changes are minimal. To have your 7.60 GUI screens look like the screen shots in curriculum select the Belize Theme with Activate animated focus and Activate SAP Fiori features checked



For clients developed on the ERP ECC platform. Change your Theme selection to Blue Crystal Theme to have the curriculum screen shots and your screen look similar.

This includes Fitter Snacker, GBI Advanced MCC and GBI AIS MCC products.



If you change the theme from within the client. Select Apply and log off then log on to see the change.